

152 Rollins Avenue #102

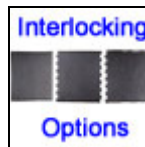
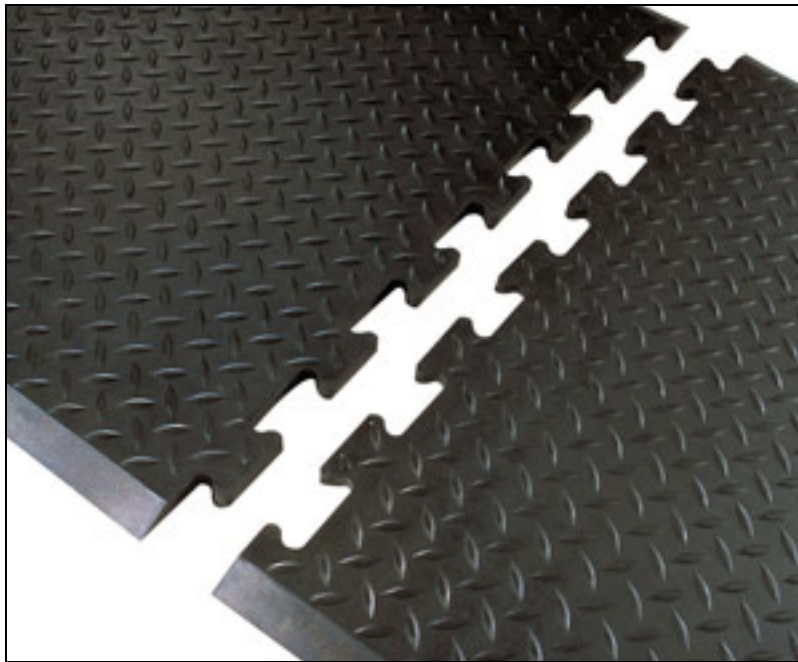
Rockville, MD 20852

800-762-9010

240-780-3309 (f)

<http://www.americanfloormats.com>

Diamond Plate Linkable Anti-Fatigue Mats



Diamond Plate Linkable Anti-Fatigue Mats are heavy-duty anti-fatigue floor mats designed for use in continuous lengths as well as single workstations.

These linkable, solid-rubber anti-fatigue mats boast a diamondplate surface for increased traction and a robust waffle shaped underside, which boosts comfort and increases durability and longevity.

- Available 1/2" thick with beveled edges.
- **Stand Alone Mats** are individual workstation mats with molded beveled safety edges on all four sides.
- **Interlocking Center Tiles** have puzzle teeth on the 2 interlocking sides and beveled edges on the other 2 sides.
- **Interlocking End Tiles** have puzzle teeth on the 1 interlocking side and beveled edges on the other 3 sides.

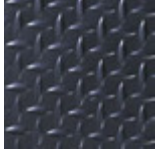
For custom length configurations, order two end tiles and the required number of center tiles.

- Ideal for Wet or dry use, mats wipe clean easily.

Item No: DTIAFRM

Standard Sizes (Approximate)

Size	Qty. 1-10	Qty. 11-25	Qty. 26-50	Qty. 51+
28" x 31"	\$52.24	\$50.16	\$48.88	\$46.64
36" x 31"	\$61.60	\$59.52	\$57.44	\$55.24

Standard Colors

Black